

iSew®

Merrylock®



3000CL

Overlock &
Cover Stitch

iSew[®] Merrylock[®] 3000CL Overlock & Cover Stitch

Merrylock 3000CL, a functional combination of overlock & cover stitch, will lead you into the unlimited creativity and imagination of sewing space. It reveals a friendly operation interface coming from human desire; operates with fluency to perform a perfect work.

By taking initiative approach of applying industrial standard specification is the main characteristic for Merrylock 3000CL to be unique from the others. Matching in excellence with professional sewing effect is highly accepted and praised by users. In addition, the mechanism design almost reaching 100% perfect even brings users' confidence for its reliable and durable usage. You will be amazed by its clever design, in particular when you face its friendly operation interface.



Friendly Interface:

- 1. Looper Automatic Threader**
A marvelous invention to offer the quickest way to thread the lower and cover stitch looper with one touch.
- 2. Build-in Narrow Rolled Hemming**
By finger tip controls without changing the needle plate. "N" for normal sewing, "R" for narrow, rolled hem and cover stitch sewing.
- 3. Stitch Length Dial**
To offer an accurate stitch length from 1mm to 4mm
- 4. Cutting Width Knob**
Provide a stitch width of up to 7mm
- 5. Removable Upper Knife**
The upper knife can be concealed and pulled and turned with ease.
- 6. Differential Feed Knob**
With varied differential feed adjustment to produce the flat seams in knits, and prevent puckering in fine fabrics.
- 7. Snap-on Presser Foot**
For varied foot changer by fingertip touch.
- 8. Auto Tension Dial Release**
Rise up the presser foot to lead auto tension release, making threading smoothly.
- 9. Built-in Lamp**
To light up the sewing area.
- 10. Color Coded**
The color-coded tension dial, thread guide and thread paths for correct threading without mistakes.
- 11. Built-in Recursive Handle**
Portable and carry in balance with ease and auto-return to original position.
- 12. Hand Wheel**
Turns counter-clockwise as conventional hand wheel.
- 13. Electronic Speed Controller**
Without any heat produced.
- 14. Presser Foot Pressure Dial**
Provide simpler attachment to adjust presser foot pressure for sewing different Fabrics.
- 15. Upper Looper Clutch**
Provide overlock and coverstitch switched each other.
- 16. 2-Thread Converter**
The most convenient and simplest converter to switch 2-thread sewing option.
- 17. Clean Pocket**
The best catcher to collect and clean scrap.
- 18. Soft carrying Case (Optional)**
Easy to pack for a sewing traveler.

Regardless of the fabric, you can sew a professional stitch, the industrial standard, for dressmaking, decorations, and ready-to-wear fashions.

Perfect Stitching

1. Overlock Stitches

12 overlock stitch variations using 2,3, and 4 thread stitch formations.

Perfect for all types of fabric, and any serging situations.

- a. Two-thread Wrapped Edge Overlock (narrow)
- b. Two-thread Wrapped Edge Overlock (wide)
- c. Two-thread Overedge (narrow)
- d. Two-thread Overedge (wide)
- e. Two-thread Rolled Hem
- f. Three-thread Overedge (narrow)
- g. Three-thread Overedge (wide)
- h. Three-thread Flatlock (narrow)
- i. Three-thread Flatlock (wide)
- j. Three-thread Rolled Hem
- k. Three-thread narrow Hem
- l. Three-thread Ultra-Stretch Mock Safety Stitch
- m. Four-thread Ultra-Stretch Mock Safety Stitch.

2. Chain Stitch

Two thread chain stitch - good for seaming, binding, gathering, and for decorative work on woven fabrics with little or no stretch.

3. Cover Stitches

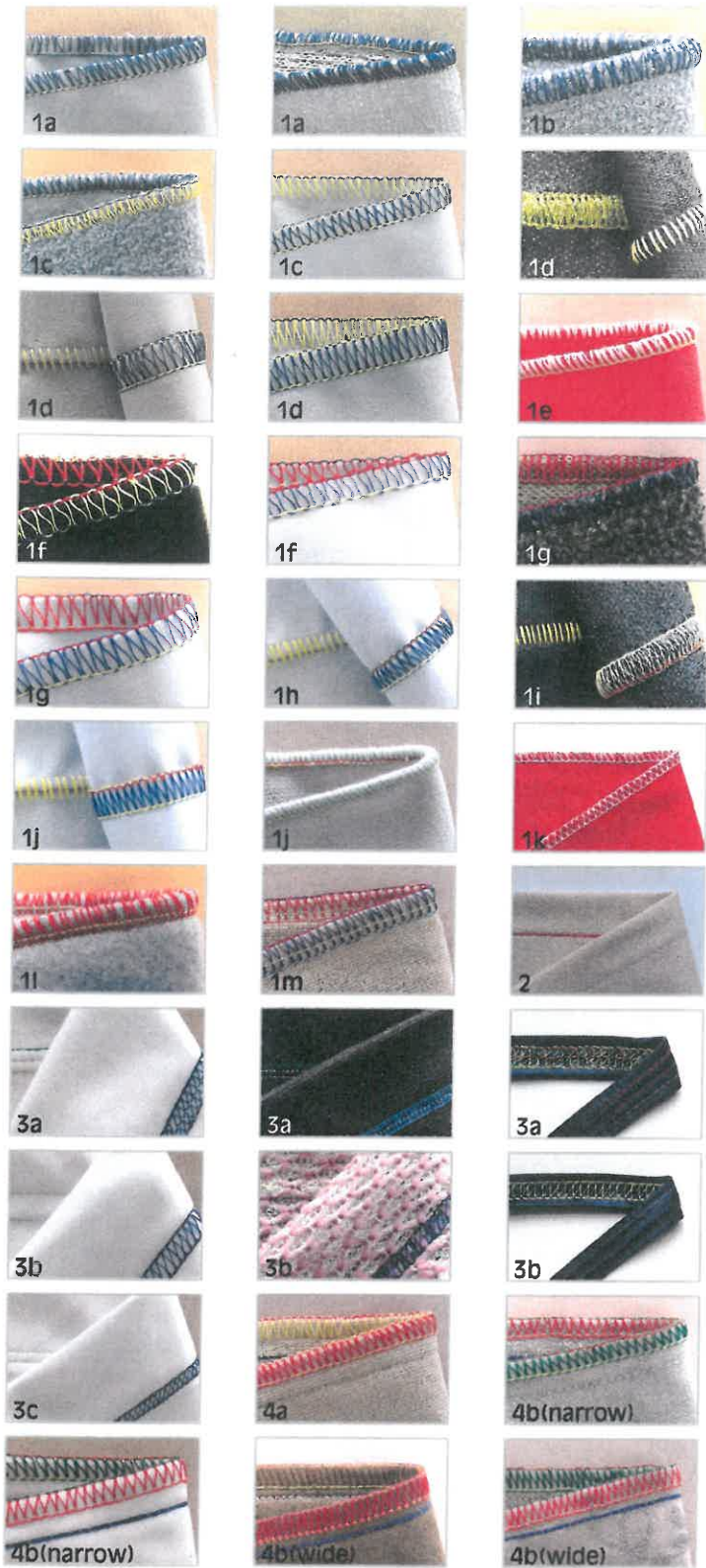
Four versions of this industry-standard stitch - great for hemming knits, sewing elastics, stitching stretch lace, decorative seams, and binding edges.

- a. Triple Cover Stitch (width 5.6mm)
- b. Wide Cover Stitch (width 5.6mm)
- c. Narrow Cover Stitch (left and right narrow cover stitch) (width 2.8mm)

4. Combination Stitches

Four combination stitches (chain plus overlock). Strong seaming stitches that are great for fabrics that ravel easily.

- a. Four-thread Safety Stitch (one chain stitch and narrow or wide overlock)
- b. Five-thread Safety Stitch (one chain stitch and narrow or wide overlock)



iSew®

Merrylock®

designs for your life

Accessories:

Optional feet

a. Beading /Sequin Foot

Serging beads, pearls, sequins and piping is a snap with this beading foot

b. Cording Foot

Easily Serge decorative cording tape between two layers of fabric in one operation.

c. Taping Foot

Serging on tapes. On Stretch materials (knitwear) the seam are prevented from stretching when a tape is sewn on.

d. Elastic Foot

Serging on elastic tape with a uniform stretch.

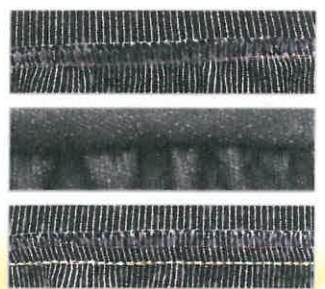
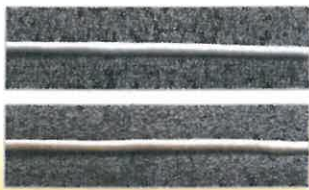
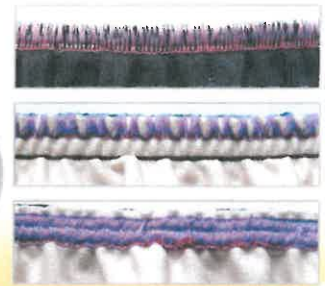
e. Blind hem /Lace Foot

Designed specifically for stitching a turned hem.

Achieve an expert look with this lace sewing foot.

f. Shirring Foot

Easily make and attach shirrs in one step to garments, pillows, and other home decorative items with this shirring foot.



Tung Shing Sewing Machine Co., Ltd.

61-65 Nam Cheong Street, G/F., Tung Shing Building, Shamshuipo, Kowloon, Hong Kong.

Tel: (852) 2725 4633 Fax: (852) 27252717

web: www.tungshing.com.hk e-mail: info@tungshing.com.hk

Merrylock®